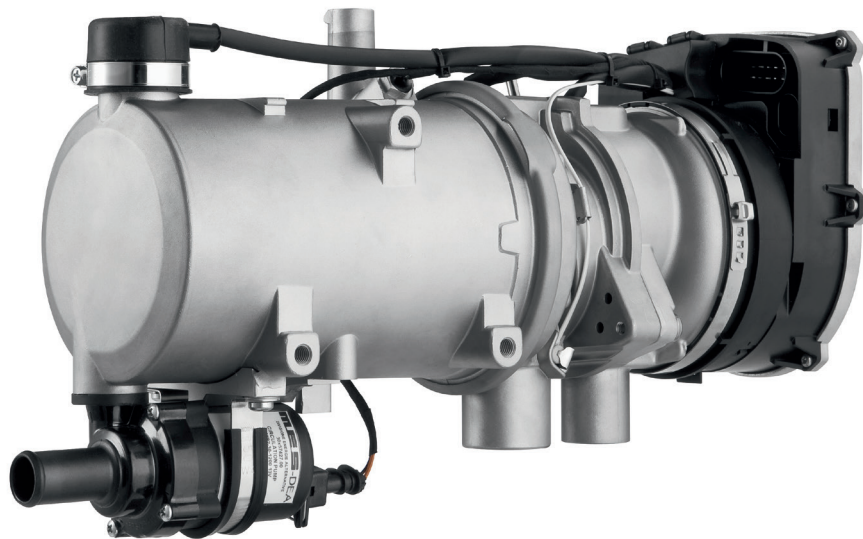


Thermo Pro 90

Engine-Off Coolant Heater for Demanding Machinery and Vehicle Applications



Coolant Heater Features:

- Auxiliary heating for heavy vehicles and machines, offering up to 31,000 BTU/h (9.1 kW) of heating power
- Arctic Start function provides quick pre-heat even in extremely cold temperatures
- Low heater power consumption due to highly efficient design
- Highest product quality with long service life
- Automatic altitude adjustment up to 11,000 feet (3,350 m)
- Available for OE and aftermarket installation
- Several mounting options available
- Quiet operation

Engine Pre-heat, Fuel Savings and Emission Reduction

The Thermo Pro 90 has been specially designed for use in heavy duty machinery and commercial vehicles, as well as in minibuses.

New features such as altitude adjustment, Arctic Start and seamless heating control provide engine-off pre-heat to make these vehicles operational in extremely cold conditions. Fuel saving and low energy consumption make a valuable contribution to both cost-savings and environmental protection.

Technical specifications

	Thermo Pro 90
Heating Capacity (Control range / Boost)	6,100 – 26,000 BTU/h / 31,000 BTU/h (1.8 – 7.6 kW / 9.1 kW)
Fuel Consumption (Control range / Boost)	0.05 – 0.23 gal/h / 0.29 gal/h (0.2 – 0.9 l/h / 1.1 l/h)
Fuels (Suitability for special fuels)	JP8, Diesel 1, Diesel 2, Arctic, Biodiesel (PME)
Rated Voltage	12 or 24 V
Power Consumption (Part load - full load / Boost)	3.1 – 6.6 / 7.3 Amps (37 – 80 W / 90 W)
Operational Temperature Range	- 40° to +176° F (- 40° to +80° C)
Dimensions (L x W x H)	15 x 5.2 x 9.1 in (381 x 131 x 232 mm)
Weight	10.8 lbs (4.9 kg)

Technical specifications for circulating pump (attached to heater)

	U4840
Coolant Flow	3 gal/min (11.4 l/m)
Dimensions (L x W x H)	7.1 x 2.9 x 4.4 in (180 x 74 x 112 mm) including connectors
Weight	1.5 lbs (0.7 kg)

Available Thermo Pro 90 Heater Kits:

Thermo Pro 90 Diesel Enclosure Box w/ SmartTemp Control 3.0 Bluetooth - (12 V) P/N: 5013916

Thermo Pro 90 Compact Kit (12 V) - P/N: 5010874

Thermo Pro 90 with Enclosure Box (12 V) - P/N: 5010872

Thermo Pro 90 Compact Kit (24 V) - P/N: 5011081

Thermo Pro 90 with Enclosure Box (24 V) - P/N: 5010873

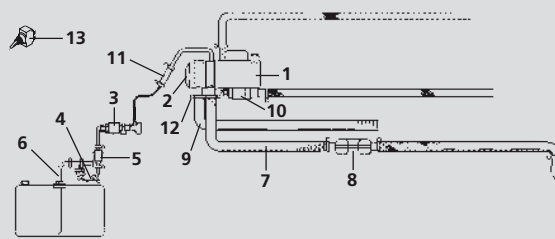
SmartTemp Control 3.0 Bluetooth:

Part Number 5013874

- Same features as SmartTemp 3.0
- Bluetooth connection to SmartTemp 3.0 App
 - View diagnostic information
 - Manage & control heater function
 - Link to techwebasto.com
 - Program settings of multiple units



System Schematic



- | | |
|----------------------------|----------------------------|
| 1. Thermo Pro 90 | 8. Muffler |
| 2. Electronic Control Unit | 9. Air Intake Tubing |
| 3. Fuel Metering Pump | 10. Water Circulating Pump |
| 4. Fuel Line | 11. Fuel Line Coupler |
| 5. Fuel Pump | 12. Clamp |
| 6. Fuel Standpipe | 13. On/Off Switch |
| 7. Exhaust Tubing | |

Standard Kit Contents:

- Heater
- Integrated Control Unit
- Fuel Metering Pump DP42
- Circulation Pump U4840
- On / Off Switch
- Wiring Harness
- Fuel Standpipe
- Fuel Line
- Exhaust System
- Installation Hardware
- Installation/Operation Instructions
- 2 Year / 2,000 Hour Limited Warranty

Webasto Thermo & Comfort
North America, Inc.

15083 North Road
Fenton, Michigan 48430
USA
Toll Free: 800-860-7866
Phone: 810-593-6000

webasto-comfort.com